



l'hermitage

Hôtel**** Lyon

*Your seminars, meetings and professional events
nestled in the hills above Lyon*

A BIT OF HISTORY



A FORMER PILGRIMAGE SITE

Up until the mid-twentieth century, a succession of hermits lived on Mont Cindre and forged the history of the site. **A pilgrimage site that became a place for contemplation**, it would later offer cafés and restaurants for the local population and for visitors who came to enjoy the exceptional view. An ever-changing **panoramic landscape** framed the passing days and the seasons.

In 2007, a new chapter opened for l'Ermitage, a former restaurant on Mont Cindre, and for the **èhôtels-Collection** Group. After offering a return to childhood with the Collège Hotel in 2003, creating **a place where guests can take time off to meditate and free themselves from everyday pressures** became the hotel group's next goal.

Brother Jean-Henri, probably the **first hermit** to live on Mont Cindre, had the chapel built

16th century

Other hermits followed him at the site, which had become a place for **contemplative withdrawal**

Late 19th

Birth of the **imaginary garden**, a work of naive art created spontaneously by Emile Daminot, the last hermit to reside at the site

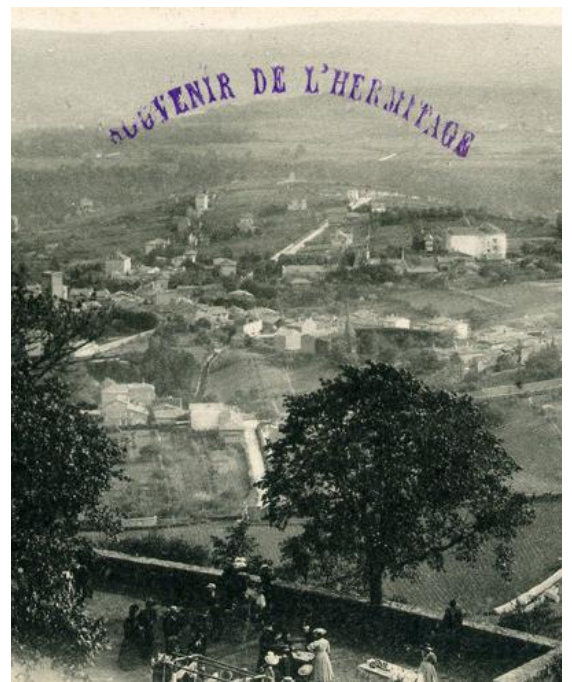
Early 20th

When it later became a place for Sunday outings, **open-air dance halls and restaurants** were built on the site

1930s

Opening of l'**Ermitage Hotel Cuisine-à-Manger******

2007



CONCEPT & STYLE

FINDING WELL-BEING TOGETHER

Nestled **high above Lyon** in a verdant setting with a **panoramic overhang**, l'Ermitage Hotel pays tribute to the spirit of the place, where an **almost monastic sobriety** permeates the air. The choice of materials, the interior decoration and the

flea-market treasures (that recall the patina of Collège Hotel) have been designed to preserve this **timeless atmosphere**.

"There is more to life than increasing its speed," said Gandhi. His comment on **slow living** inspired the theme of the

site, in the exceptional setting of Mont Cindre, where **serenity and contemplation** reign. L'Ermitage Hotel invites you to replace **"more" with "better"**: sleep better, eat better, work better and relax better. In sum, it's a place for "finding well-being together".



WHY L'ERMITAGE HOTEL CUSINE-À-MANGER IS YOUR BEST CHOICE

1

A luxuriant, greenery-filled setting with **terraces overlooking a panorama of Lyon**, just fifteen minutes from the city center.

2

Three meeting rooms bathed in luminosity, including one with a panoramic terrace.

A home available for private use that can be adapted to your event.

3

Twenty-six rooms on three levels, most of them with a panoramic view.

Free **parking**.

4

A **bistronic** restaurant, the Cuisine-à-Manger of l'Ermitage Hotel.

Family-style local cuisine at the Là Haut sur la Colline restaurant.

5

A stay that includes relaxing in a **well-being area** with breathtaking views and an indoor-outdoor heated swimming pool, Jacuzzi and sensory shower, as well as outdoor leisure activities with **terraces, lawn bowling** and **ping-pong**.

6

Touristic activities and sports in the nearby area: hermitage chapel, Imaginary Garden, typical cabornes, hiking and mountain bike trails.



MEETING ROOMS



L'ÉTUDE

18 sqm room

A study with an atypical decoration that's perfect for a **small meeting** or **team brainstorming**.

LA MAISON

67 sqm semi-detached home

Charming home available for private use, with **terrace, veranda** and **enclosed garden**, for your seminars and **professional events**

L'ATELIER

67 sqm room

An area for your events with beautiful **natural light** from large windows opening on a **private terrace** with a panoramic view that's perfect for taking a break.

MATERIAL INCLUDED

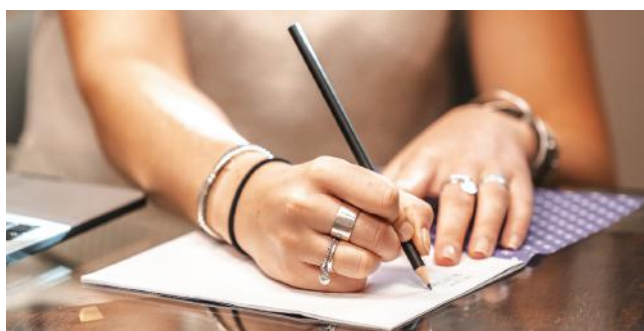
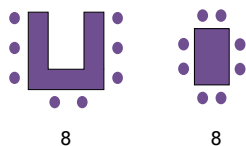
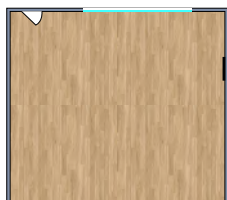
Video projector, screen and PC/Mac connections, paperboard, note pads, pencils mineral water.

	THEATER	CLASSROOM	U-SHAPE	DINNER	COCKTAIL
L'ÉTUDE	-	-	8	8	-
LA MAISON	60	50	30	50	80
L'ATELIER	50	35	20	50	80

L'ÉTUDE

DISPOSITION LAYOUT

U-shape - Block



- ✓ 18 sqm work area 42" TV screen
- ✓ Free WiFi internet access
- ✓ Flea-market treasures: jeweler's workbench and Thonet bridge chairs covered in green leather



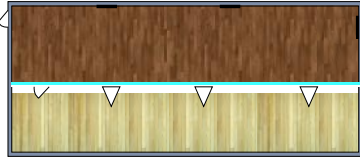
THE +

Just the right size for your smaller meetings, this studious setting encourages the expression of new brainstorming ideas and is perfect for a design thinking workshop.

L'ATELIER

DISPOSITION LAYOUT

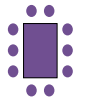
U-shape - Theater -
Block - Classroom



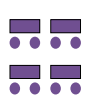
20



50



30



35



- ✓ 67 sqm event area
- ✓ Sound system with wireless microphone
- ✓ One central screen for your projections

- ✓ Private panoramic terrace
- ✓ Large jeweler's workbenches from the flea market
- ✓ Free WiFi internet access



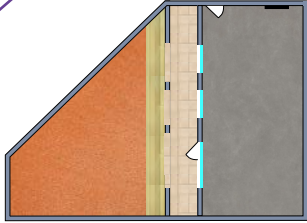
THE

Adjoining terrace overlooking the Monts d'Or for work breaks in a magnificent setting that encourages creativity and informal discussions.

LA MAISON

DISPOSITION LAYOUT

U-shape - Classroom
Theater - Block



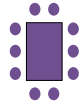
30



50



60



35



- ✓ Charming semi-detached 67 sqm home
- ✓ Terrace with heated veranda and bar
- ✓ Enclosed private garden

- ✓ Central screen with video projector
- ✓ Sound system
- ✓ Free WiFi internet access



THE +

Possibility of outside activities in warmer weather and an original restaurant formula featuring roasted meat served on a sword, known as "rodizio".

EATING

Two restaurant formulas are available, depending on your wishes and needs:

- **La Cuisine-à-manger**, a bistro menu loaded with inventive tastes
- **Là Haut sur la Colline**, a family restaurant featuring comfort food.

LA CUISINE-À-MANGER

Since the kitchen and dining room are contiguous, they create a convivial, relaxed atmosphere.

The restaurant's **bistro menu** recalls the legendary **conviviality** of Lyon-style hospitality.

Seasonal menus, fresh produce and homemade dishes are the ingredients behind a blend of **original tastes**. The terraces and glassed-in setting give a front-row view of the spectacle offered by the ever-changing **landscape**.



LÀ HAUT SUR LA COLLINE

Just steps from l'Ermitage Hotel, Là Haut sur la Colline proposes generous, family-style **traditional specialties**, where local products are the stars of the show.

Both small groups and large gatherings can enjoy their meal **by the fireside** in winter and **on the terraces and in the garden** in summer.

In this quaint restaurant with the feel of an inn, the only goal is enjoying the meal and the only duty is **remaining faithful to gastronomical tradition**.

SLEEPING

L'Ermitage Hotel has **26 rooms** decorated in a minimalistic style recalling a hermit's cell, with **breathtaking views** of the Monts d'Or and the city of Lyon that encourage **contemplation**. On each door, a **quotation** about **time** invites meditation.

Les Marronniers are spacious rooms opening on the Chemin de l'Ermitage and featuring a desk area.

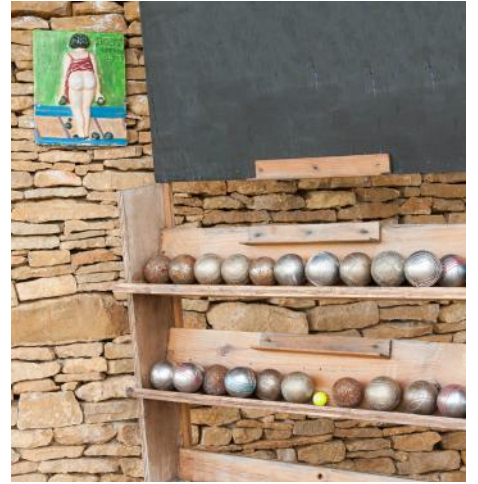
Les Contemplatives are rooms with panoramic views of Lyon and the Monts d'Or range; they also have a desk area.

L'Appartement is made up of two rooms with sleeping arrangements for four, with panoramic views over Lyon and the Monts d'Or and a desk area.

La Belvédère, is a unique corner room with a 360° view of Lyon and the Monts d'Or; it includes a desk area.



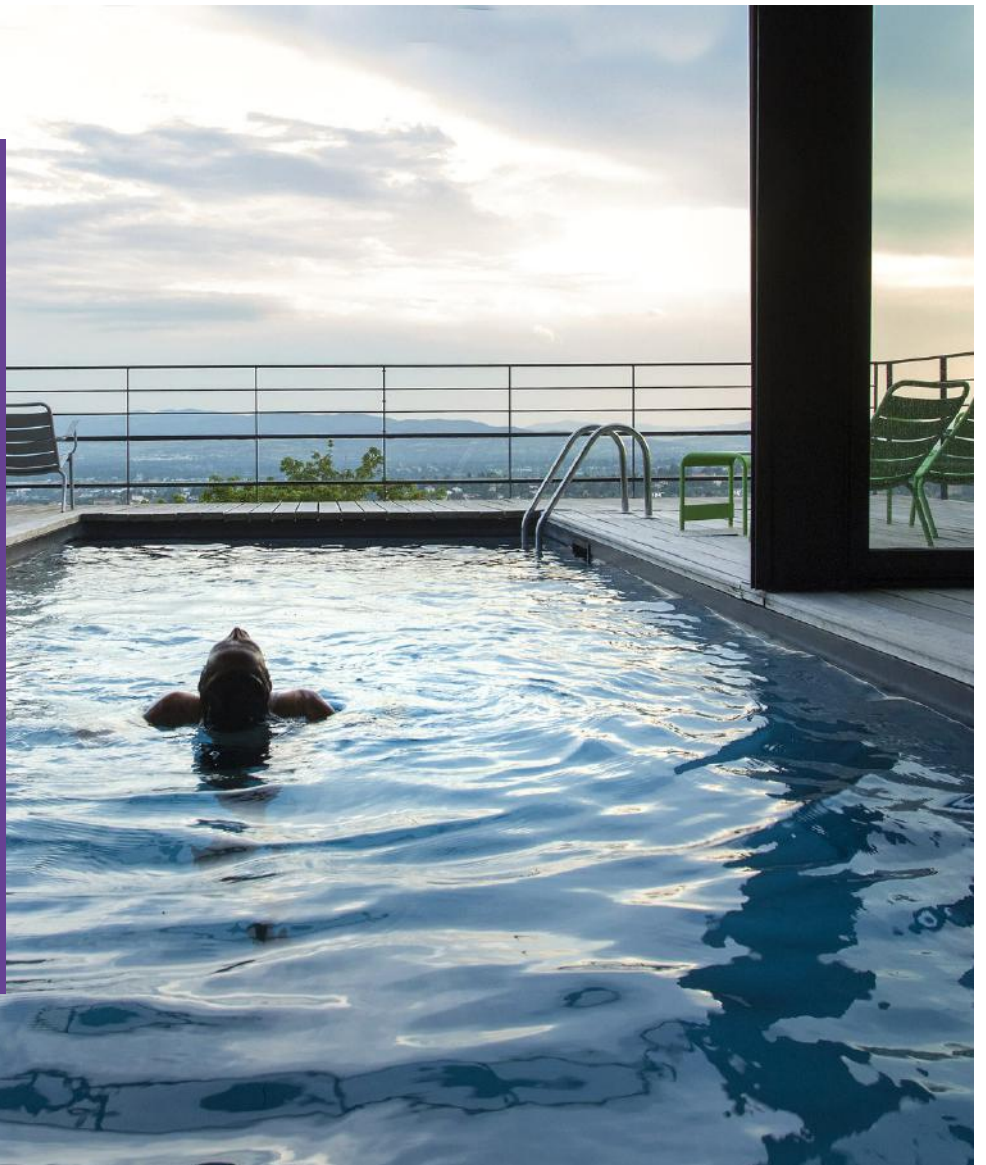
RELAXING



WELL-BEING AND LEISURE AREA

Staying at the hotel includes open access to the hotel's well-being facilities:

- **"In and out" heated pool** with a panoramic view
- **Spa** with Jacuzzi and sensorial shower
- **Lawn bowling** and **ping pong** tables are available for enjoying a relaxing moment
- **La Guinguette**, a high terrace for private use, with **"Le Tube"**, a Citroen van that has been converted into a bar.



TOURING

VISITING MONT CINDRE AND LYON

Since it is located in the heart of the Monts d'Or range, l'Ermitage Hotel offers a number of nearby tourist possibilities, including **Mont Verdun**, the highest point in metropolitan Lyon; the **Hermitage Chapel** decorated with frescoes by Louis Touchage; the **cabornes**, which are traditional shepherds' huts in ochre-colored stones; the **Demeure du Chaos**; the Museum of the painter Jean Couty; and the **Saône Riverbanks** promenade, featuring marvelous viewpoints and 23 works of art.



INCENTIVE ACTIVITIES

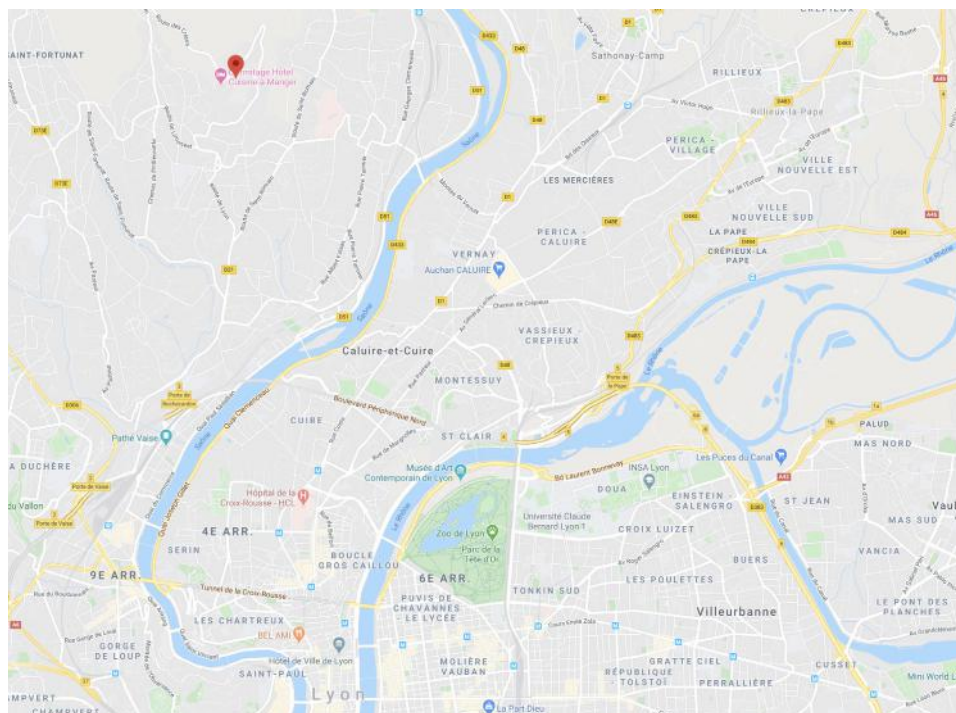
This is the way to personalize and promote your event.

Activities that are part of the hotel include **workshops, food and wine tasting, Lyon-style lawn bowling** and various **party games**.

With our partners, we offer **original walks** around the Monts d'Or, local explorations in a **2 CV** car and **team building** activities to encourage team spirit.



HOW TO GET HERE



Chemin de l'Ermitage,
Saint-Cyr-au-Mont-d'Or

Nestled atop Mont Cindre, just 15 minutes from the center of Lyon, **L'Ermitage Hotel****** and the Cuisine-à-Manger restaurant offer breathtaking views.

Access by car or taxi is recommended and made easier with a private parking facility.



BY CAR

Address

Chemin de l'Ermitage
69450 Saint-Cyr au Mont d'Or

GPS coordinates

Latitude : E 4°49'10" Longitude : N 45°49'18"

Free parking lot with 70 places.



BY PUBLIC TRANSPORTATION

By bus

Line 20
Every 20 minutes

Departure: Gare de Vaise stop
Arrival: Saint Cyr stop + 15 minutes on foot



FROM LYON SAINT EXUPÉRY AIRPORT

By taxi

Trip time: 45 minutes to an hour, depending on traffic

By Rhônexpress

Direct shuttle from Lyon Saint-Exupéry Airport to the Part Dieu train station (30 minutes)



FROM THE TGV STATIONS

Lyon Part-Dieu Train Station

By taxi: 30 min

Lyon Perrache Station

By taxi: 40 min

YOUR CONTACT



CLAUDIA BELLIA

COMMERCIAL SERVICE
commercial@ermitage-college-hotel.com

+33 4 72 19 69 69 | www.ermitage-college-hotel.com | contact@ermitage-college-hotel.com

 @ErmitageHotelLyon |  @ermitage_hotel

